

Standard Features BLM Rods:

- Premium Cork Rear Split Grips
- Blank Exposed Reel Seat
- Fuji Micro Guides
- Fuji Tip Top
- Closed Hook Keeper
- Sensi Ramp No Foregrip
- Serial Number Tracking

Big Lake Guide Service has been in business for more than twenty-five years and we value our customers repeat business.

Big Lake Guide Service goes the extra mile to insure that your first Big Lake Micro Rod will not be your last.

We will assist you in selecting the correct rod and suggest ways to insure that you will be pleased with your choice.

Included with each Big Lake Micro Rod:

Attachment 1: BLM Care and Use

Attachment 2: Protecting Your Investment

Attachment 3: Warranty Agreement

Individual Tracking Serial Number

Off premises seminars provided on a scheduled basis. Ask Jeff, Mary or Nick to schedule a club or organization meeting.

Big Lake Micro Rods

Speckled Trout, Redfish
Black Drum, Flounder, Triple Tail

Capt. Jeff's Jig Master

BLM 793	ML	Extra Fast
6' 7"	6 - 12#	1/8 - 3/8 oz



Capt. Mary's Limit Stick

BLM 782	Light	Fast
6' 7"	6 - 12#	1/8 - 1/2 oz

Capt. Nick's Sow Slayer

BLM 842	Light	Fast
7' 0"	8 - 1W2#	1/8 - 1/2 oz

Big Lake Switch Hitter

BLM 822	ML	Mod Fast
6' 10"	8 - 14#	3/8 - 3/4 oz

150 Junius Granger Rd
Lake Charles, LA 70607
Phone: (337) 598-3268

Fax: 337-598-4499

Email: biglakegs@camtel.net

Big Lake Custom Rods



JEFF, MARY & NICK POE

Get Professional Advice

to Get the Right Rod

to Catch More & Bigger Fish





Big Lake Guide Service is proud to announce an exclusive line of custom inshore micro rods.

We at **Big Lake Guide Service** specialize in speckled trout and redfish using artificial lures. The fishing techniques require light weight, fast tipped and sensitive fishing rods.

For the past three years, custom rod-builders have successfully used new small guides, called micro guides, to improve sensitivity, casting distance and improved rod performance.

New Rods? You Bet!

Look closely at the size of the guides on the fishing rods in your boat or storage room. Now look at the comparative size of the guides used on **Big Lake Micro Rods**.



Fig 1 Micro Guide - Eraser

Big Lake Guide Service is the first inshore guide service to design a set of micro rods to match task specific techniques.



www.BigLakeGuideService.com

What are the advantages of a fishing rod using Micro Guides?

Anglers' place a high priority on the sensitivity and balance of a fishing rod. Reducing the tip section weight of a fishing rod has a major impact on the "in hand feel" of the rod.

A set of micro guides weigh 85% less than a set of standard guides. The lightweight of the micro rod raises the bar for all desired performance characteristics with increased durability.

Improved casting distance occurs due to line control and reduction in lateral losses caused by "line slap" when using larger conventional guide systems.

Anglers seeing a micro rod for the first time normally say "The fishing line will not go through those tiny little guides!"

Here are the facts!

A test cast by an angler results in total astonishment. The wide-eyed disbelief is quite evident and predictable.

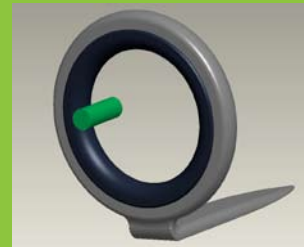


Fig 2 Micro Guide - 12# mono/50# braid

Why do Micro Guides work?

Take a close look at the size of the little ring used on the pawl guide of many high-end bait-casting reels.

Is there any logical reason why any guide on a baitcasting rod needs to be larger than the pawl guide on the reel?

The answer is no!

Custom builders and fishermen know that most line guides used on conventional casting rods are simply too large!

Request a personal demonstration of a micro rod by Jeff, Mary or Nick. Better yet, schedule a trip with **Big Lake Guide Service** and watch the Poe's.

Big Lake Guide Service micro rods provide unsurpassed benefits to the inshore angler.

- Improved sensitivity resulting in improved bite detection.
- Reduction in angler fatigue using a lighter rod for power techniques.
- Longer casting distance due to line control.
- More lure in water time due to "wind knot" reduction.
- Less guide repair due to smaller footprint.

www.BigLakeGuideService.com